

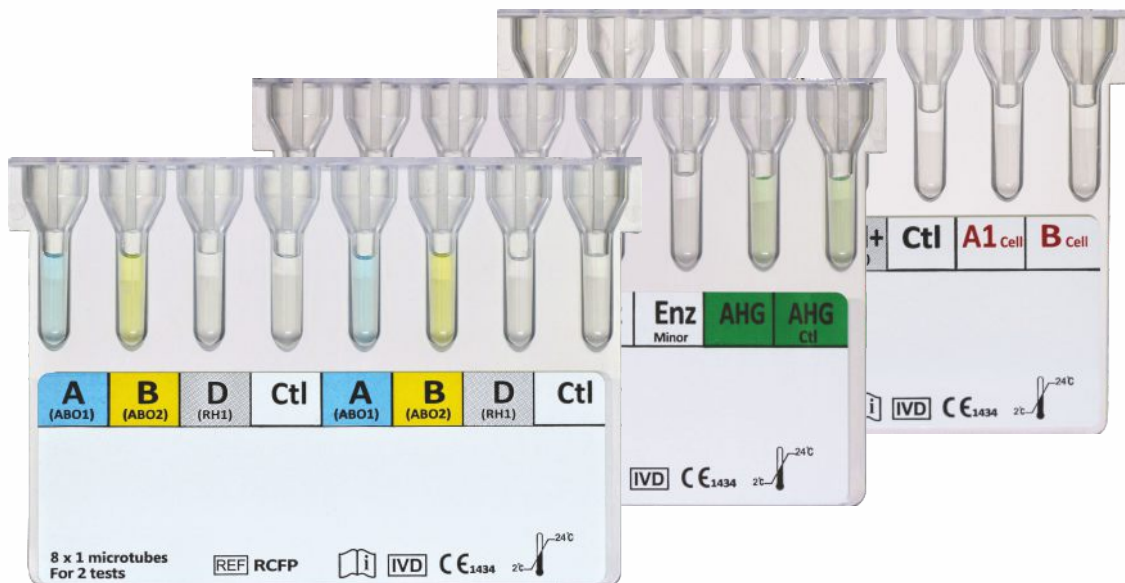


Blood Grouping Systems

www.redcell.com.tr

RELIABLE

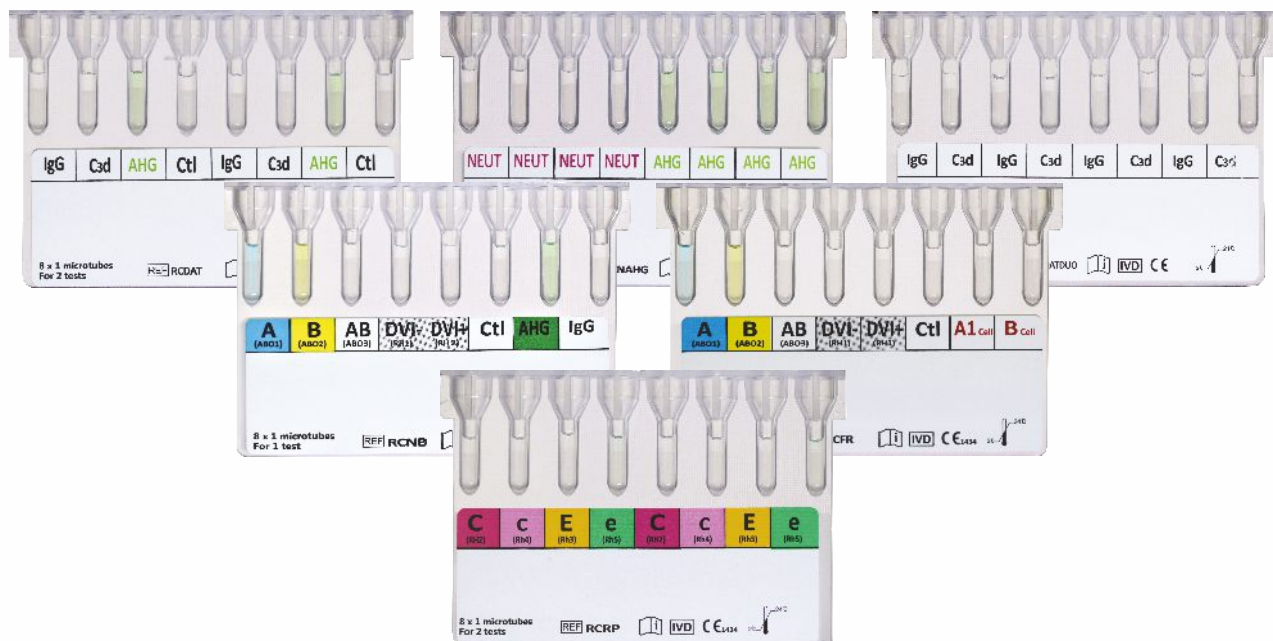
RedCell Blood Grouping Tests are gel column systems that provide easy and reliable blood grouping tests such as ABO grouping, Rh (D) identification, Cross match, Antibody screening, Antibody identification, Rh Subgroup determination (C, c, E, e and K).

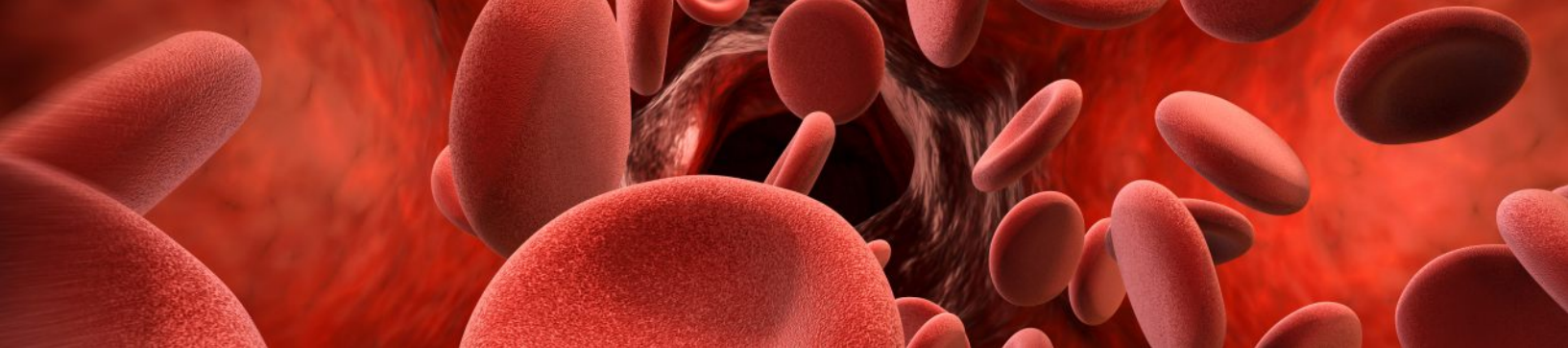


- RedCell Blood Grouping Tests are CE marked.
- Test sensitivity and reliability have been increased by using different antibody mixtures with the proven gel method.
- Different reaction intensities are easily evaluated visually and with the related devices.

EASY & FLEXIBLE

- Cards are designed for compatibility with every laboratory and blood center and is suitable for use with standard devices.
- Compatible with manual and automatic devices.
- 8-well card system offers more reaction chances on one card.
- RedCell Blood Grouping Systems offers a wide range of products to fit for every need.





REDCELL Blood Grouping Gel Systems

Forward ABO patient

A	B	D	Ctl	A	B	D	Ctl
---	---	---	-----	---	---	---	-----

Identifies ABO and Rh D groups by using gel method. One card involves 2 tests. Includes control well.

Packing: 48 Forward ABO patient Gel Cards
Product No: RCFP

Forward AB plus

A	B	AB	D	A	B	AB	D
---	---	----	---	---	---	----	---

Identifies ABO and Rh D groups by using gel method. One card involves 2 tests. Does not include control well, instead includes AB.

Packing: 48 Forward AB plus Gel Cards
Product No: RCFABP

Forward /Reverse

A	B	AB	DVI-	DVI+	Ctl	A1 _{cell}	B _{cell}
---	---	----	------	------	-----	--------------------	-------------------

Provides the detection of ABO, Rh D, Rh D VI ve reverse grouping on one gel card. Identifies DVI- weak reactive and partial variants of D but not the VI variant of D directly. Identifies DVI+ reactive, variant of DVI includes D variants and weak D's. Identifies the erythrocytes of antibody Rh DVI directly. At the last two wells A1 and B cells are used for reverse apply.

Packing: 48 Forward /Reverse Gel Cards
Product No: RCFR

Forward / Reverse Donor

A	B	AB	DVI+	K	Ctl	A1 _{cell}	B _{cell}
---	---	----	------	---	-----	--------------------	-------------------

Provides the detection of ABO, K, Rh D VI and reverse grouping on one gel card.

Packing: 48 Forward / Reverse Donor Gel Cards
Product No: RCFRD

Forward /CDE

A	A1	B	AB	DVI-	DVI+	CDE	Ctl
---	----	---	----	------	------	-----	-----

Identifies ABO and Rh D groups and CDE by using gel method. One card involves 1 test.

Packing: 48 Forward / CDE Gel Cards
Product No: RCFCDE

Comp/Cross

A	B	D	Ctl	Enz	Enz	AHG	AHG
---	---	---	-----	-----	-----	-----	-----

The gel card for forward grouping and Cross-match Provides detection of ABO, Rh mismatch, the existence of antibodies that are against donators erythrocytes in patients serum or the patients erythrocytes in donators serum.

Packing: 48 Comp/Cross Gel Cards
Product No: RCCC

Newborn

A	B	AB	DVI-	DVI+	Ctl	AHG	IgG
---	---	----	------	------	-----	-----	-----

Provides applying of ABO, RH D, Rh D VI and direct Coombs test on newborns on one gel card. AHG well involves Polyclonal anti-IgG and monoclonal C3 antibodies, IgG well involves monospecific Anti-IgG antibodies.

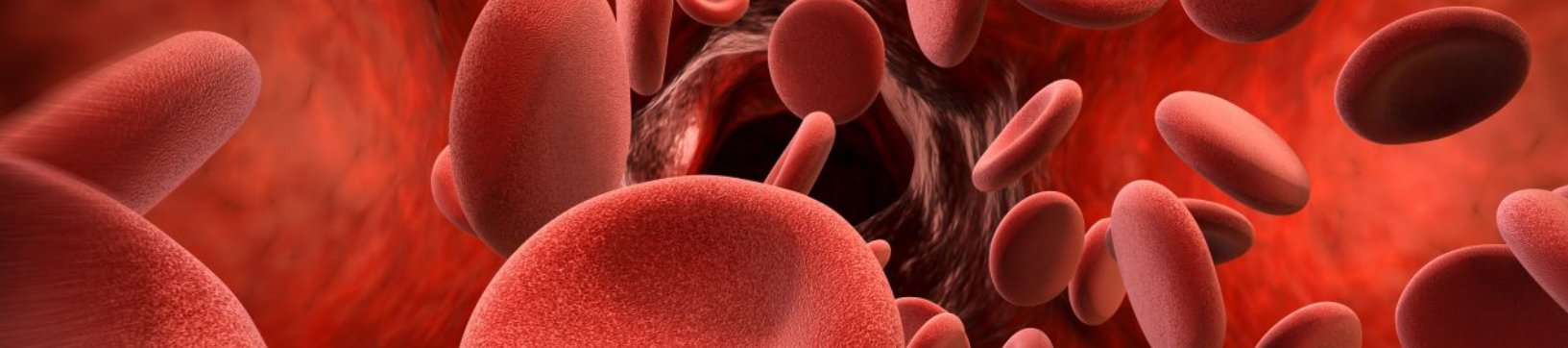
Packing: 48 Newborn Gel Cards
Product No: RCNB

Neutral Gel

NEUT	NEUT	NEUT	NEUT	NEUT	NEUT	NEUT	NEUT
------	------	------	------	------	------	------	------

Provides applying of reverse grouping, antibody screening and determining, compability tests.

Packing: 48 Neutral Gel Cards
Product No: RCNEU



REDCELL Blood Grouping Gel Systems

Rh Phenotype

C	c	E	e	C	c	E	e
---	---	---	---	---	---	---	---

Provides identifying of Rh subgroups antigens which have clinic importance by gel method.

Packing: 48 RH Phenotype Gel Cards

Product No: RCRP

Rh Phenotype plus

C	c	Cw	E	e	K	DVI+	Ctl
---	---	----	---	---	---	------	-----

Provides identifying of Rh including Cw and K antibodies which have clinic importance by gel method.

Packing: 48 RH Phenotype Plus Gel Cards

Product No: RCRPP

DAT Duo

IgG	C3d	IgG	C3d	IgG	C3d	IgG	C3d
-----	-----	-----	-----	-----	-----	-----	-----

Provides determining the erythrocytes that get sensitive as in-vivo with IgG or complement C3d. Involves IgG well monospesific Anti-IgG, C3d well Anti human C3

Packing: 48 DAT Duo Gel Cards

Product No: RCDATDUO

A1 Gel

A1	A1	A1	A1	A1	A1	A1	A1
----	----	----	----	----	----	----	----

This test provides identifying of A1 antibody inside erythrocytes by using gel method.

Packing: 48 A1 Gel Cards

Product No: RCA1

H Gel

H	H	H	H	H	H	H	H
---	---	---	---	---	---	---	---

This test provides identifying of H antibody inside erythrocytes by using gel method.

Packing: 48 H Gel Cards

Product No: RCH

Neutral/AHG

NEUT	NEUT	NEUT	NEUT	AHG	AHG	AHG	AHG
------	------	------	------	-----	-----	-----	-----

Provides applying of Indirect Coombs test (IAT), compatibility, antibody screening and determining tests indirectly.

Packing: 48 Neutral/AHG Gel Cards

Product No: RCNEUAHG

AHG

AHG	AHG	AHG	AHG	AHG	AHG	AHG	AHG
-----	-----	-----	-----	-----	-----	-----	-----

Provides applying of Coombs test (DAT) directly, Coombs test (IAT), compatibility, antibody screening and determining tests indirectly.

All wells include Polyspecific anti-human globulin.

Packing: 48 AHG Gel Cards

Product No: RCAHG

IgG

IgG	IgG	IgG	IgG	IgG	IgG	IgG	IgG
-----	-----	-----	-----	-----	-----	-----	-----

Provides applying of Coombs test (DAT) directly, Coombs test (IAT), compatibility, antibody screening and determining tests indirectly. All wells include monospesific anti-human globulin.

Packing: 48 IgG Gel Cards

Product No: RCIGG

DAT Screen

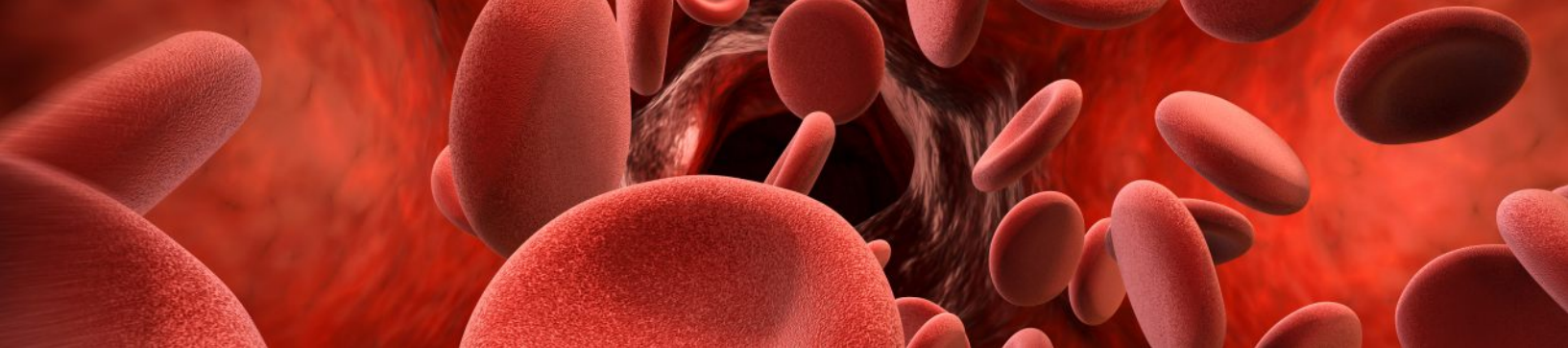
IgG	C3d	AHG	Ctl	IgG	C3d	AHG	Ctl
-----	-----	-----	-----	-----	-----	-----	-----

Provides determining the erythrocytes that get sensitive as in-vivo with IgG or complement C3d.

Involves IgG well monospesific Anti-IgG, C3d well Anti human C3, AHG well Polyspecific anti-human globuin.

Packing: 48 DAT Screen Gel Cards

Product No: RCDAT



REDCELL

Blood Grouping Red Blood Cells

Red Blood Cells for Antibody Screening and Determining

Cell Screen 1-2-3

Product No: RBCAS3

Cell ID 11

Product No: RBCAS11

REDCELL Blood Grouping Systems

Diluent and Solutions

Bromelin Solution

Product No: BS10 10 ml
BS50 50 ml

Papain Solution

Product No: PS 10 ml

LISS Diluent

Product No: LISS 500 ml

Red Blood Cells for Reverse Grouping

OBG Cell Reverse A1, B

Product No: RBC2



Gel Card Centrifuge

- 24 gel cards capacity
- Audible alarm
- Automatic lid opening system



Gel Card Incubator

- 24 gel cards capacity
- Audible alarm
- Two independent heating sections

Gel Card Reader

- Computer connection
- Test result image
- Test results record
- Test results can be sent to the automation system or printer



RED CELL BIOTECHNOLOGY INC.
Serifali Mah. Beyit Sok. No: 66 D4
Umraniye / ISTANBUL / TURKEY

www.redcell.com.tr

REDCELL BLOOD GROUPING SYSTEM
Catalog: Rev 02

